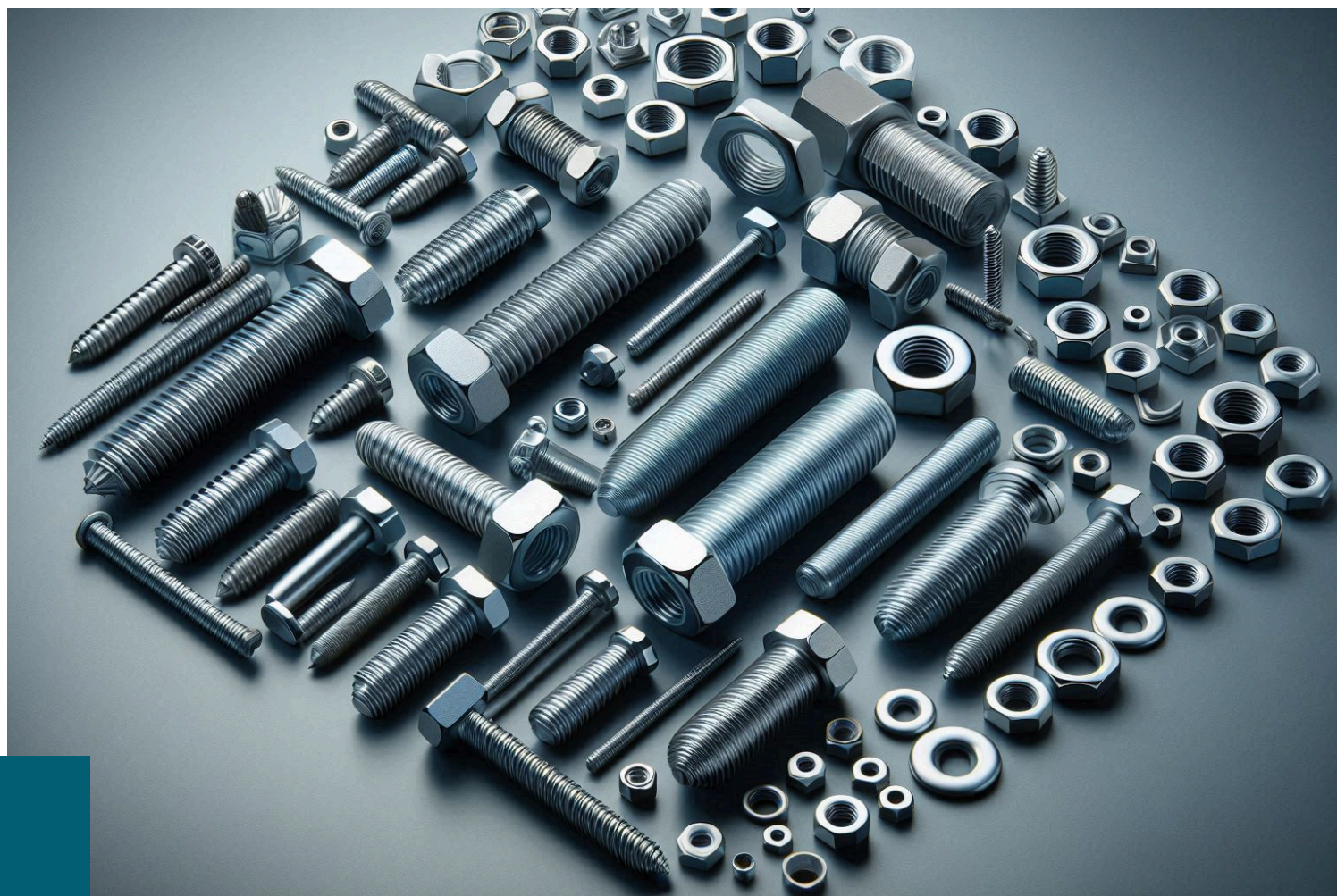


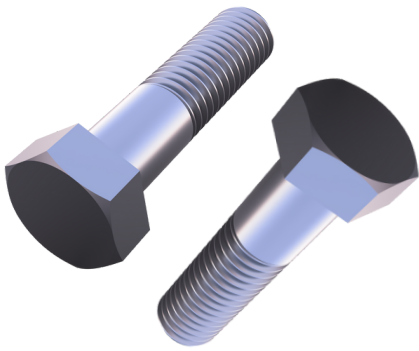
FASTENER CATALOG



Latest Catalog By RKG Technology Inc.

2025-2026

rkgtech.inc@gmail.com



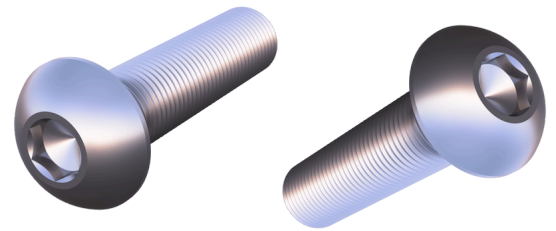
HEX BOLT

A hex bolt is a type of bolt characterized by its six-sided (hexagonal) head and external threading. It's a common fastener used to create secure connections by being inserted into a matching internally threaded hole or used with a nut.

BOLT

SOCKET HEAD CAP

Socket Head Cap Screws are ideal fasteners for high precision, strength, and limited space assemblies requiring a finely tooled appearance. Because socket head cap screws feature exceptionally high tensile and yield strength, a given size may be comparable in strength to the next larger diameter of a standard low-carbon steel screw.



MACHINE SCREWS

Machine screws are typically designed with finer, more accurate threads than alternative fastener types. They are generally intended for use with a pre-drilled interior tapped hole or a nut.

ROUND HEAD

Pan Head bolts are slightly rounded head with short vertical sides. The round head bolts are similar to carriage bolts, with the exception that there is no square neck under the head. Some round heads may have a knurl under the head.





abc

SET SCREWS

Set screws are sometimes called setscrews, socket set screws, or grub screws. They are a type of threaded fastener, most often used for securing components in place. This generally means affixing two or more loose parts to one another, for example by holding one component tightly against (or inside) a second surface.

BINDING POSTS

Binding post screws, also called Chicago screws or screw posts, are primarily used for securing and binding various materials together, especially for documents, portfolios, and other applications requiring easy editing or updates.



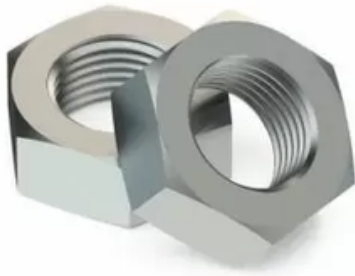
abc



abc

THUMB SCREWS

Thumb screws can be used in a wide range of tasks and assemblies. Their main use is for fastening down panels, wiring, lids, safety covers, battery compartments, and any other part or component that might need to be removed and reinstalled frequently.



HEX NUTS

Hex nuts are a type of nut fastener with a six-sided (hexagonal) shape, commonly used in industrial and construction settings to secure bolts and screws. Their six sides provide a solid base for wrenches or sockets to grip and tighten the nut, ensuring a firm connection.

NUTS

LOCK NUTS

Lock nuts, also known as self-locking nuts, are designed to resist loosening under vibration or torque. They are used in applications where maintaining a secure connection is crucial, even when subjected to movement or rotational forces.



WING NUTS

Wing nut is an insulting slang term for a person who's considered eccentric or who has extreme political views. In a completely different context, wing nut is also a term for a nut (a piece of usually metal hardware that attaches to a bolt) with two tabs on its sides that kind of look like wings.

THUMB NUTS

Brass thumb nuts are designed to be driven by hand, and are commonly found in ornamental applications. Because of the manual drive style, they are commonly used where installation and removal may be frequent, or in applications requiring adjustments.





abc

SOCKET NUTS

Socket nuts, also known as Allen nuts or internal wrenching nuts, feature an internal socket on one end and standard threading on the other. The socket facilitates installation with a hex key, which allows for a tighter and more secure fit that minimizes the risk of loosening under vibration or stress.

HANDLE NUTS

Handle nuts are fasteners used in applications that require the frequent loosening and tightening of bolts.



abc



abc

SQUARE NUTS

A square nut is a four-sided nut, designed to be used with square-headed bolts. It provides a greater surface area in contact with the fastened material compared to a hex nut, which increases resistance to loosening and rounding.

KEEP IN TOUCH

RKG Technology Inc.
Franklin Square,
New York, 11010

516-447-1313

rkgtech.inc@gmail.com

www.engineering.rkgmarket.com

